

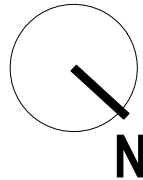
DEVELOPER:



SUBJECT TO MUNICIPAL APPROVAL

# PROPOSED REDEVELOPMENT OF NUTAN AAYOJAN AT MALAD (W) UNDER REG. 33/9 OF DCPR 2034

## PRESENTATION FOR SOCIETY



### PROPOSED REDEVELOPMENT OF NUTAN AAYOJAN CHS AT MALAD (W)

KALAKRUTI ARCHITECT AND PLANNERS : B-002, PRAMILA SADAN, SHREESIDHI COMPLEX, TILAK NAGAR, VISHWESHWAR ROAD, NEAR UDIPI HOTEL, NEXT TO HANUMAN MANDIR, GOREGAON (E), 400063, kalakruti.arch@gmail.com, 29276430

NOTE - THE ABOVE DRAWING IS THE COPY RIGHT DRAWING OF KALAKRUTI ARCHITECTS & PLANNERS MUMBAI, AND SHALL NOT B REPRODUSED / REUSED / TRANSFERED WITHOUT THE WRITEN PERMISSION OF THE ARCHITECT.



TOTAL BUA		34,176.37 SQM													
		<b>A WING</b>				<b>B WING</b>									
FLOOR	HT IN METER	1	2	3	4	5	6	1	2	3	4	5	6	7	8
BASEMENT 1															
PLINTH	0.15														
GROUND	3.6	299	292	291	249	242	SHOP		SHOP	SHOP					
P1	2.9	SHOP	SHOP	SHOP	313										
P2	2.9														
P3	2.9														
P4	3.55														
ECO DECK	3.15														
1	3.15	SALE			SALE	SALE	SALE	515	433	571	433			685	750
2	3.15	SALE	SALE	SALE	SALE	SALE	SALE	515	433	571	433	650	650	685	750
3	3.15	REF	SALE	SALE	SALE	SALE	SALE	REF	433	571	433	650	650	685	REF
4	3.15	SALE	SALE	SALE	SALE	SALE	SALE	515	433	571	433	650	650	685	750
5	3.15	SALE	SALE	SALE	SALE	SALE	SALE	515	433	571	433	650	650	685	750
6	3.15	SALE	SALE	SALE	SALE	SALE	SALE	515	433	571	433	650	650	685	750
7	3.15	SALE	SALE	SALE	SALE	SALE	SALE	515	433	571	551	650	650	685	750
8	3.15	SALE	SALE	SALE	SALE	SALE	SALE	515	433	571	551	650	650	685	750
9	3.15	SALE	SALE	SALE	SALE	SALE	SALE	515	433	571	551	650	650	685	750
10	3.15	REF	SALE	SALE	SALE	SALE	SALE	REF	433	571	551	650	650	685	REF
11	3.15	SALE	SALE	SALE	SALE	SALE	SALE	515	433	585	551	650	650	750	750
12	3.15	SALE	SALE	SALE	SALE	SALE	SALE	515	433	585	551	650	650	750	750
13	3.15	SALE	SALE	SALE	SALE	SALE	SALE	515	433	585	551	650	650	750	750
14	3.15	SALE	SALE	SALE	SALE	SALE	SALE	515	433	585	551	650	650	TERRACE AT 14TH	SALE
15	3.15	SALE	SALE	CFO TANK	SALE	SALE	SALE	515	433	585	551	CFO TANK	650	TERRACE AT 14TH	1035
16	3.15	SALE	SALE	SALE	SALE	SALE	SALE	551	433	585	551	650	650		1035
17	3.15	REF	SALE	SALE	SALE	SALE	SALE	REF	REF	585	551	650	650		1035
18	3.15	SALE	SALE	SALE	SALE	SALE	SALE	551	433	585	551	650	650		1035
19	3.15	SALE	SALE	SALE	SALE	SALE	SALE	551	433	585	551	650	SALE		1035
20	3.15	SALE	SALE	SALE	SALE	SALE	SALE	551	433	585	551	SALE	SALE		1035
21	3.15	SALE	SALE	SALE	SALE	SALE	SALE	551	433	585	551	SALE	SALE		1035
22	3.15	SALE	SALE	SALE	SALE	SALE	SALE	551	433	585	571	SALE	SALE		1035
23	3.15	SALE	SALE	SALE	SALE	SALE	SALE	551	433	585	571	SALE	SALE		1035
24	3.15	SALE	SALE	SALE	SALE	REF	REF	REF	SALE	585	571	SALE	SALE	REF	REF
25	3.15	SALE	SALE	SALE	SALE	SALE	SALE	551	433	585	571	SALE	SALE		1035
26	3.15	SALE	SALE	SALE	SALE	SALE	SALE	551	433	585	571	SALE	SALE		1275
27	3.15	SALE	SALE	SALE	SALE	SALE	SALE	551	433	585	571	SALE	SALE		1275
28	3.15	SALE	SALE	SALE	SALE	SALE	SALE	551	433	585	571	SALE	SALE		1275
29	3.15	SALE	SALE	SALE	SALE	SALE	SALE	551	433	585	571	SALE	SALE		1275
30	3.15	SALE	SALE	SALE	SALE	SALE	SALE	551	433	SALE	SALE	SALE	SALE		1275
31	3.15	SALE	SALE	SALE	SALE	SALE	SALE	551	433	SALE	SALE	SALE	SALE		SALE
32	3.15	SALE	SALE	SALE	SALE	SALE	SALE	551	433	SALE	SALE	SALE	SALE		SALE
<b>TOTAL</b>	<b>119.95</b>	0	0	0	0	0	0	14960	12990	16825	15431	11050	11050	9100	24975
<b>TOTAL UNITS</b>		#VALUE!	#VALUE!	#VALUE!	#VALUE!	#VALUE!	#VALUE!	<b>28</b>	<b>31</b>	<b>32</b>	<b>32</b>	<b>30</b>	<b>31</b>	<b>13</b>	<b>29</b>

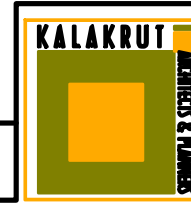
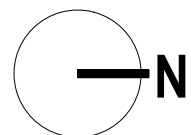
COMM. HT.  
4.2M

SUBJECT TO MUNICIPAL APPROVAL

BUILDING

# TYPICAL FLOOR PLAN WITH SITE PROPOSED REDEVELOPMENT OF NUTAN AAYOJAN CHS AT MALAD (W)

KALAKRUTI ARCHITECT AND PLANNERS : B-002, PRAMILA SADAN, SHREESIDHI COMPLEX, TILAK NAGAR, VISHWESHWAR ROAD, NEAR UDIPI HOTEL, NEXT TO HANUMAN MANDIR, GOREGAON (E), 400063, kalakruti.arch@gmail.com, 29276430  
NOTE - THE ABOVE DRAWING IS THE COPY RIGHT DRAWING OF KALAKRUTI ARCHITECTS & PLANNERS MUMBAI, AND SHALL NOT B REPRODUSED / REUSED / TRANSFERED WITHOUT THE WRITEN PERMISSION OF THE ARCHITECT.



SUBJECT TO MUNICIPAL APPROVAL



**PARKING STATEMENT**

FLOOR	SURFACE CARS			TOTAL CARS
	SMALL CARS	BIG CARS	TANDOM CARS	
BASEMENT	70	35	50	155
GROUND	12	13	26	51
P1	12	22	4	38
P2	27	24	30	81
P3	27	24	30	81
P4	27	24	30	81
<b>TOTAL</b>	<b>175</b>	<b>142</b>	<b>170</b>	<b>487</b>

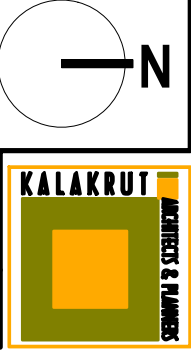
13M WIDE LIBERTY GARDEN ROAD NO.4

# GROUND FLOOR PLAN

## PROPOSED REDEVELOPMENT OF NUTAN AAYOJAN CHS AT MALAD (W)

KALAKRUTI ARCHITECT AND PLANNERS : B-002, PRAMILA SADAN, SHREESIDHI COMPLEX, TILAK NAGAR, VISHWESHWAR ROAD, NEAR UDIPI HOTEL, NEXT TO HANUMAN MANDIR, GOREGAON (E), 400063, kalakruti.arch@gmail.com, 29276430

NOTE - THE ABOVE DRAWING IS THE COPY RIGHT DRAWING OF KALAKRUTI ARCHITECTS & PLANNERS MUMBAI, AND SHALL NOT B REPRODUSED / REUSED / TRANSFERED WITHOUT THE WRITTEN PERMISSION OF THE ARCHITECT.





SUBJECT TO MUNICIPAL APPROVAL



13 M WIDE LIBERTY GARDEN ROAD NO.4

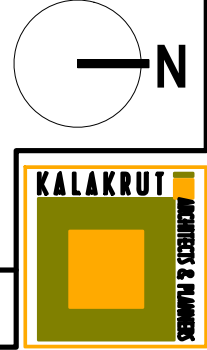
PARKING STATEMENT				
FLOOR	SURFACE CARS			TOTAL CARS
	SMALL CARS	BIG CARS	TANDOM CARS	
BASEMENT	70	35	50	155
GROUND	12	13	26	51
P1	12	22	4	38
P2	27	24	30	81
P3	27	24	30	81
P4	27	24	30	81
<b>TOTAL</b>	<b>175</b>	<b>142</b>	<b>170</b>	<b>487</b>

## BASEMENT FLOOR PLAN

# PROPOSED REDEVELOPMENT OF NUTAN AAYOJAN CHS AT MALAD (W)

KALAKRUTI ARCHITECT AND PLANNERS : B-002, PRAMILA SADAN, SHREESIDHI COMPLEX, TILAK NAGAR, VISHWESHWAR ROAD, NEAR UDIPI HOTEL, NEXT TO HANUMAN MANDIR, GOREGAON (E), 400063, kalakruti.arch@gmail.com, 29276430

NOTE - THE ABOVE DRAWING IS THE COPY RIGHT DRAWING OF KALAKRUTI ARCHITECTS & PLANNERS MUMBAI, AND SHALL NOT B REPRODUSED / REUSED / TRANSFERED WITHOUT THE WRITEN PERMISSION OF THE ARCHITECT.



SUBJECT TO MUNICIPAL APPROVAL

BUILDING

**PARKING STATEMENT**

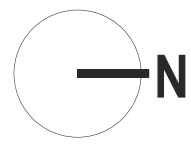
FLOOR	SURFACE CARS			TOTAL CARS
	SMALL CARS	BIG CARS	TANDOM CARS	
BASEMENT	70	35	50	155
GROUND	12	13	26	51
P1	12	22	4	38
P2	27	24	30	81
P3	27	24	30	81
P4	27	24	30	81
<b>TOTAL</b>	<b>175</b>	<b>142</b>	<b>170</b>	<b>487</b>

# 1ST PODIUM FLOOR PLAN

## PROPOSED REDEVELOPMENT OF NUTAN AAYOJAN CHS AT MALAD (W)

KALAKRUTI ARCHITECT AND PLANNERS : B-002, PRAMILA SADAN, SHREESIDHI COMPLEX, TILAK NAGAR, VISHWESHWAR ROAD, NEAR UDIPI HOTEL, NEXT TO HANUMAN MANDIR, GOREGAON (E), 400063, kalakruti.arch@gmail.com, 29276430

NOTE - THE ABOVE DRAWING IS THE COPY RIGHT DRAWING OF KALAKRUTI ARCHITECTS & PLANNERS MUMBAI, AND SHALL NOT B REPRODUSED / REUSED / TRANSFERED WITHOUT THE WRITTEN PERMISSION OF THE ARCHITECT.





SUBJECT TO MUNICIPAL APPROVAL

BUILDING

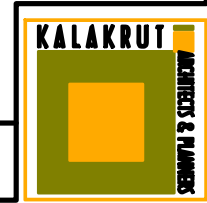
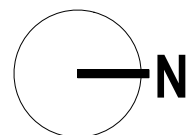
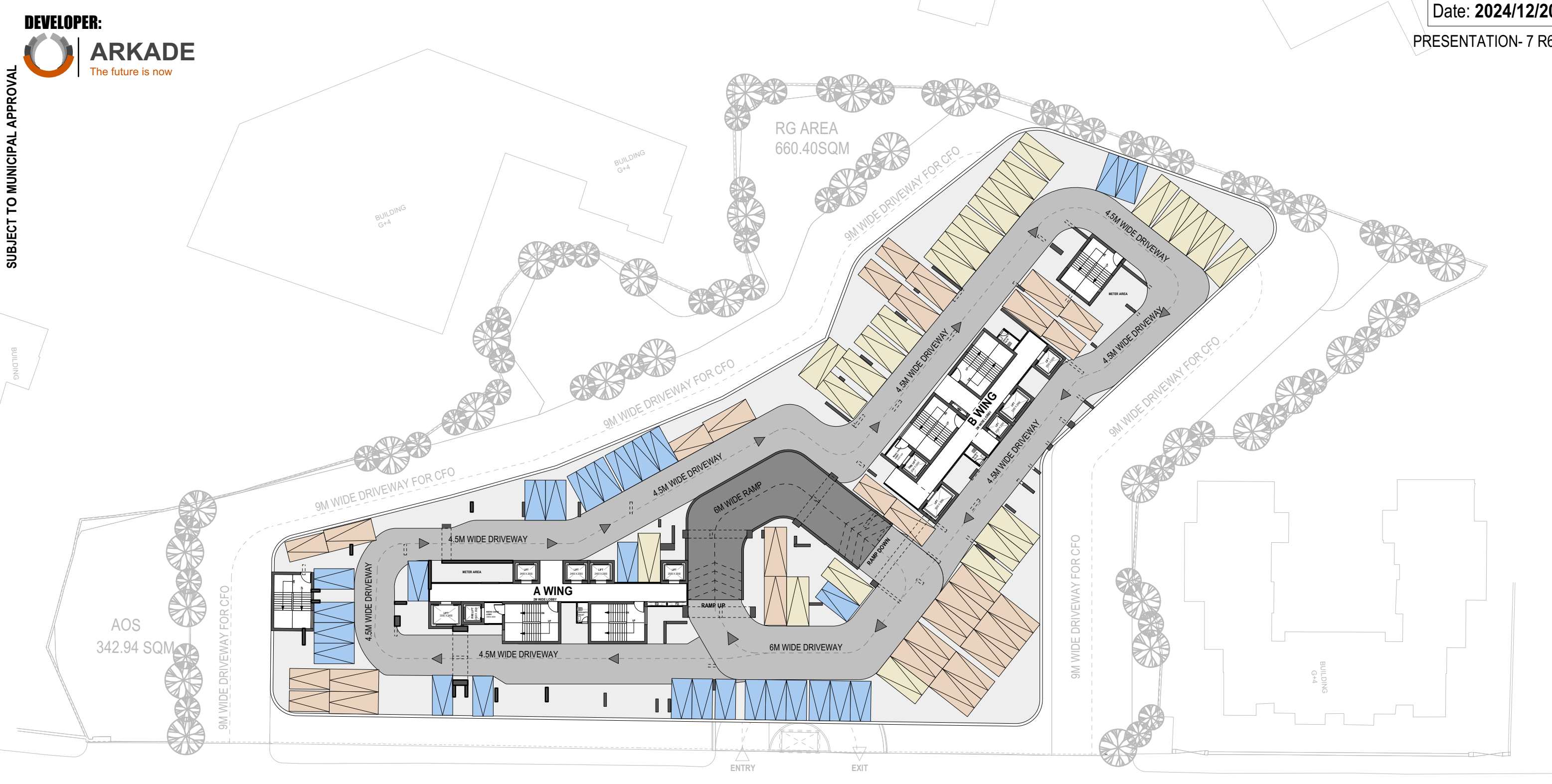
PARKING STATEMENT				
FLOOR	SURFACE CARS			TOTAL CARS
	SMALL CARS	BIG CARS	TANDOM CARS	
BASEMENT	70	35	50	155
GROUND	12	13	26	51
P1	12	22	4	38
P2	27	24	30	81
P3	27	24	30	81
P4	27	24	30	81
<b>TOTAL</b>	<b>175</b>	<b>142</b>	<b>170</b>	<b>487</b>

# 2ND - 4TH PODIUM FLOOR PLAN

## PROPOSED REDEVELOPMENT OF NUTAN AAYOJAN CHS AT MALAD (W)

KALAKRUTI ARCHITECT AND PLANNERS : B-002, PRAMILA SADAN, SHREESIDHI COMPLEX, TILAK NAGAR, VISHWESHWAR ROAD, NEAR UDIPI HOTEL, NEXT TO HANUMAN MANDIR, GOREGAON (E), 400063, kalakruti.arch@gmail.com, 29276430

NOTE - THE ABOVE DRAWING IS THE COPY RIGHT DRAWING OF KALAKRUTI ARCHITECTS & PLANNERS MUMBAI, AND SHALL NOT B REPRODUSED / REUSED / TRANSFERED WITHOUT THE WRITEN PERMISSION OF THE ARCHITECT.





13M WIDE LIBERTY GARDEN ROAD NO.4

SHREE SAI SHRADHA PLOT

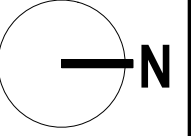
ECO DECK AREA OPEN TO SKY - 24550 SQFT  
 AMENITY AREA REQUIRED 683.53 SQM  
 AMENITY AREA PROPOSED 609.08 SQM

### 5TH ECO DECK PLAN WITH SITE

# PROPOSED REDEVELOPMENT OF NUTAN AAYOJAN CHS AT MALAD (W)

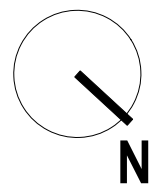
KALAKRUTI ARCHITECT AND PLANNERS : B-002, PRAMILA SADAN, SHREESIDHI COMPLEX, TILAK NAGAR, VISHWESHWAR ROAD, NEAR UDIPI HOTEL, NEXT TO HANUMAN MANDIR, GOREGAON (E), 400063, kalakruti.arch@gmail.com, 29276430

NOTE - THE ABOVE DRAWING IS THE COPY RIGHT DRAWING OF KALAKRUTI ARCHITECTS & PLANNERS MUMBAI, AND SHALL NOT B REPRODUSED / REUSED / TRANSFERED WITHOUT THE WRITEN PERMISSION OF THE ARCHITECT.





SUBJECT TO MUNICIPAL APPROVAL

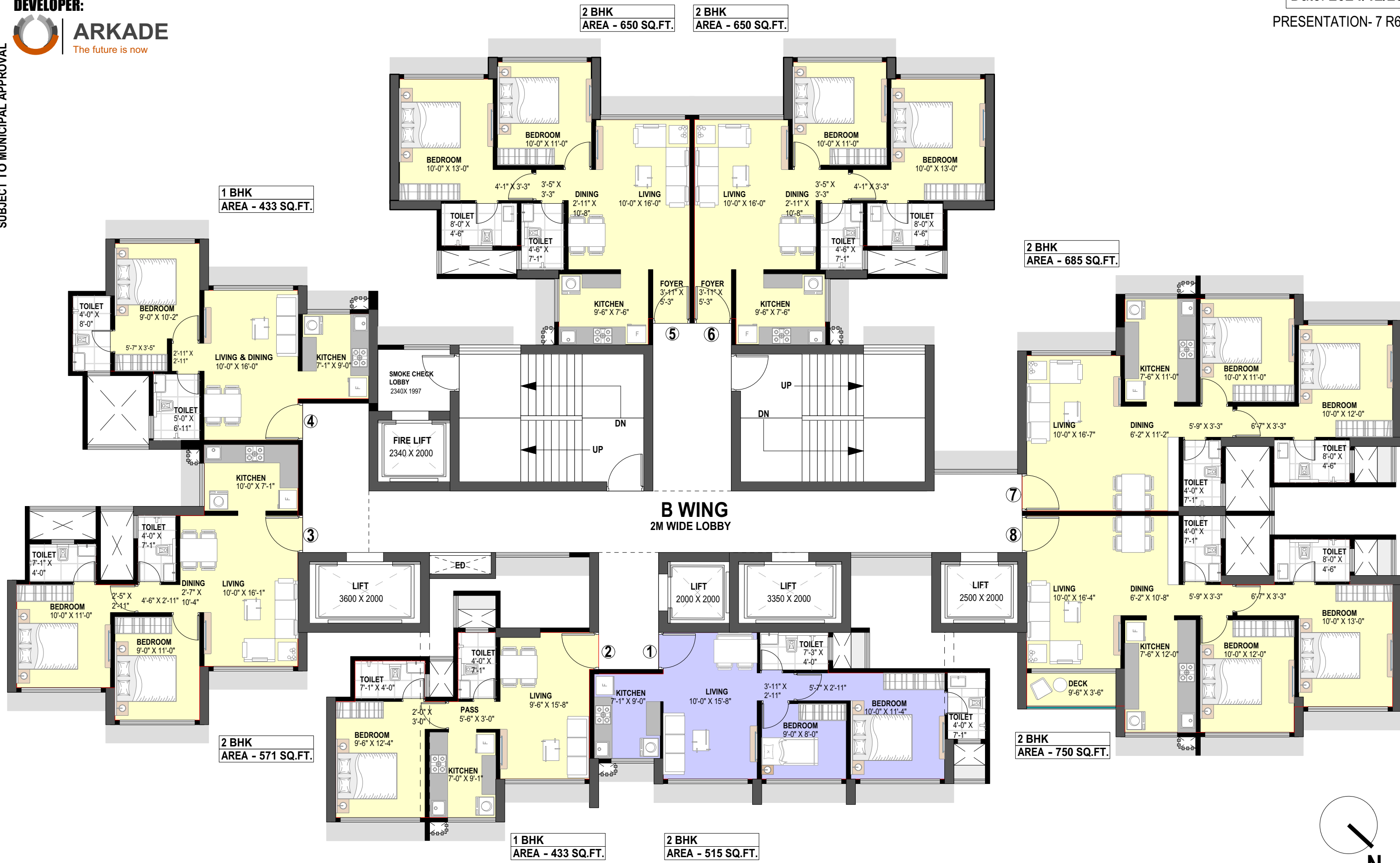


# B WING- 1ST FLOOR PLAN

## PROPOSED REDEVELOPMENT OF NUTAN AAYOJAN CHS AT MALAD (W)



SUBJECT TO MUNICIPAL APPROVAL



1 BHK  
AREA - 433 SQ.FT.

2 BHK  
AREA - 650 SQ.FT.

2 BHK  
AREA - 650 SQ.FT.

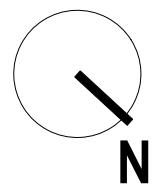
2 BHK  
AREA - 685 SQ.FT.

2 BHK  
AREA - 571 SQ.FT.

2 BHK  
AREA - 750 SQ.FT.

1 BHK  
AREA - 433 SQ.FT.

2 BHK  
AREA - 515 SQ.FT.



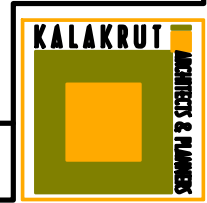
# B WING- 2ND & 4TH TO 6TH FLOOR PLAN PROPOSED REDEVELOPMENT OF NUTAN AAYOJAN CHS AT MALAD (W)



SUBJECT TO MUNICIPAL APPROVAL

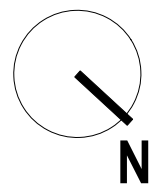


# B WING- 3RD REFUGE FLOOR PLAN PROPOSED REDEVELOPMENT OF NUTAN AAYOJAN CHS AT MALAD (W)

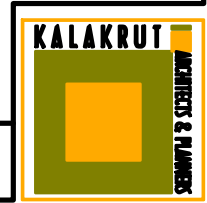




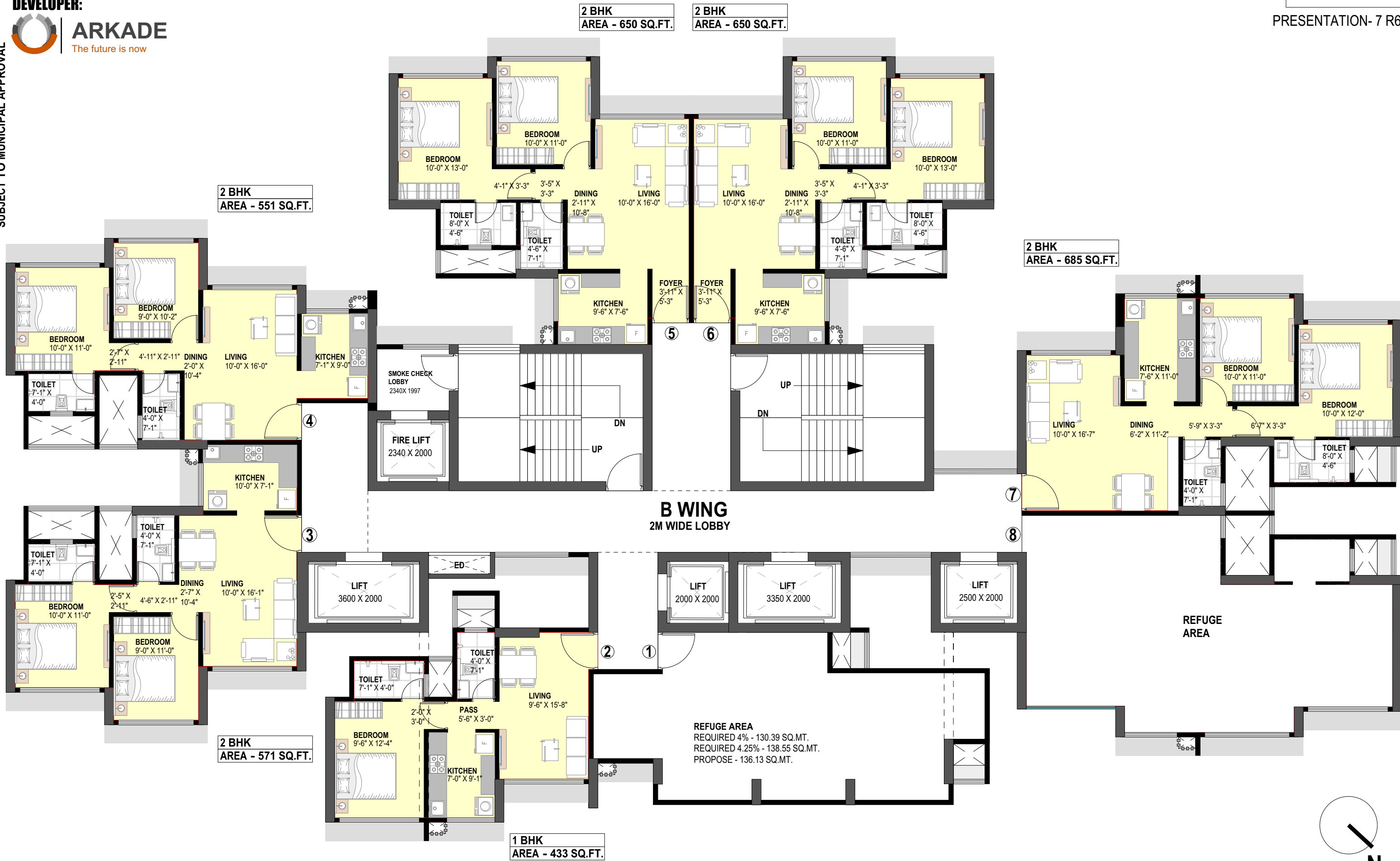
SUBJECT TO MUNICIPAL APPROVAL



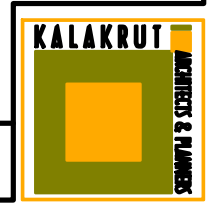
# B WING- 7TH TO 9TH FLOOR PLAN PROPOSED REDEVELOPMENT OF NUTAN AAYOJAN CHS AT MALAD (W)



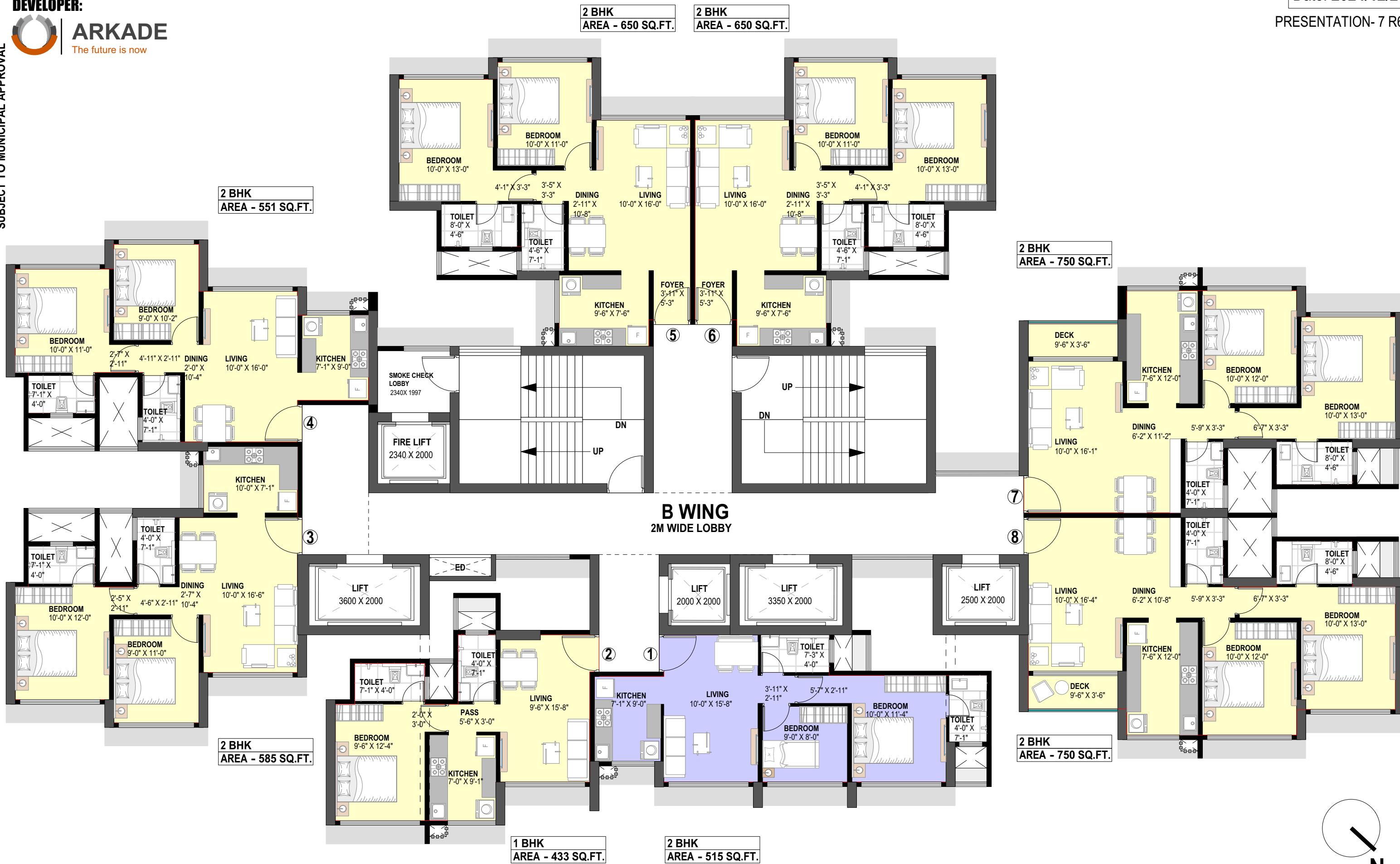
SUBJECT TO MUNICIPAL APPROVAL



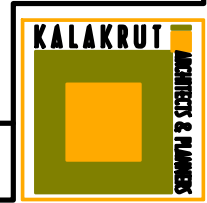
# B WING- 10TH REFUGE FLOOR PLAN PROPOSED REDEVELOPMENT OF NUTAN AAYOJAN CHS AT MALAD (W)



SUBJECT TO MUNICIPAL APPROVAL

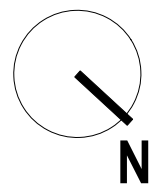


# B WING- 11TH TO 13TH FLOOR PLAN PROPOSED REDEVELOPMENT OF NUTAN AAYOJAN CHS AT MALAD (W)

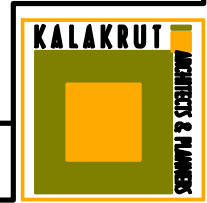




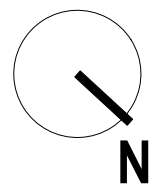
SUBJECT TO MUNICIPAL APPROVAL



# B WING- 14TH FLOOR PLAN PROPOSED REDEVELOPMENT OF NUTAN AAYOJAN CHS AT MALAD (W)

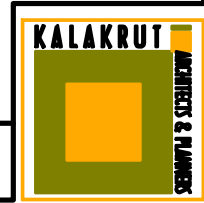


SUBJECT TO MUNICIPAL APPROVAL



# B WING- 15TH FLOOR PLAN

## PROPOSED REDEVELOPMENT OF NUTAN AAYOJAN CHS AT MALAD (W)

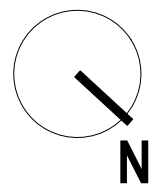


SUBJECT TO MUNICIPAL APPROVAL



# B WING- 16TH & 18TH FLOOR PLAN

## PROPOSED REDEVELOPMENT OF NUTAN AAYOJAN CHS AT MALAD (W)

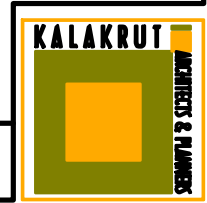
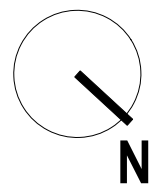




SUBJECT TO MUNICIPAL APPROVAL



# B WING- 17TH REFUGE FLOOR PLAN PROPOSED REDEVELOPMENT OF NUTAN AAYOJAN CHS AT MALAD (W)





SUBJECT TO MUNICIPAL APPROVAL



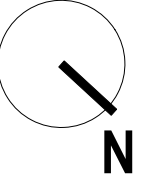
**2 BHK**  
 AREA - 551 SQ.FT.

**2 BHK**  
 AREA - 585 SQ.FT.

**1 BHK**  
 AREA - 433 SQ.FT.

**2 BHK**  
 AREA - 551 SQ.FT.

**3 BHK**  
 AREA - 1035 SQ.FT.

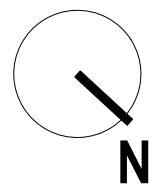


# B WING- 20TH & 21ST FLOOR PLAN

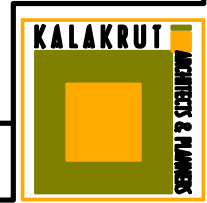
## PROPOSED REDEVELOPMENT OF NUTAN AAYOJAN CHS AT MALAD (W)



SUBJECT TO MUNICIPAL APPROVAL

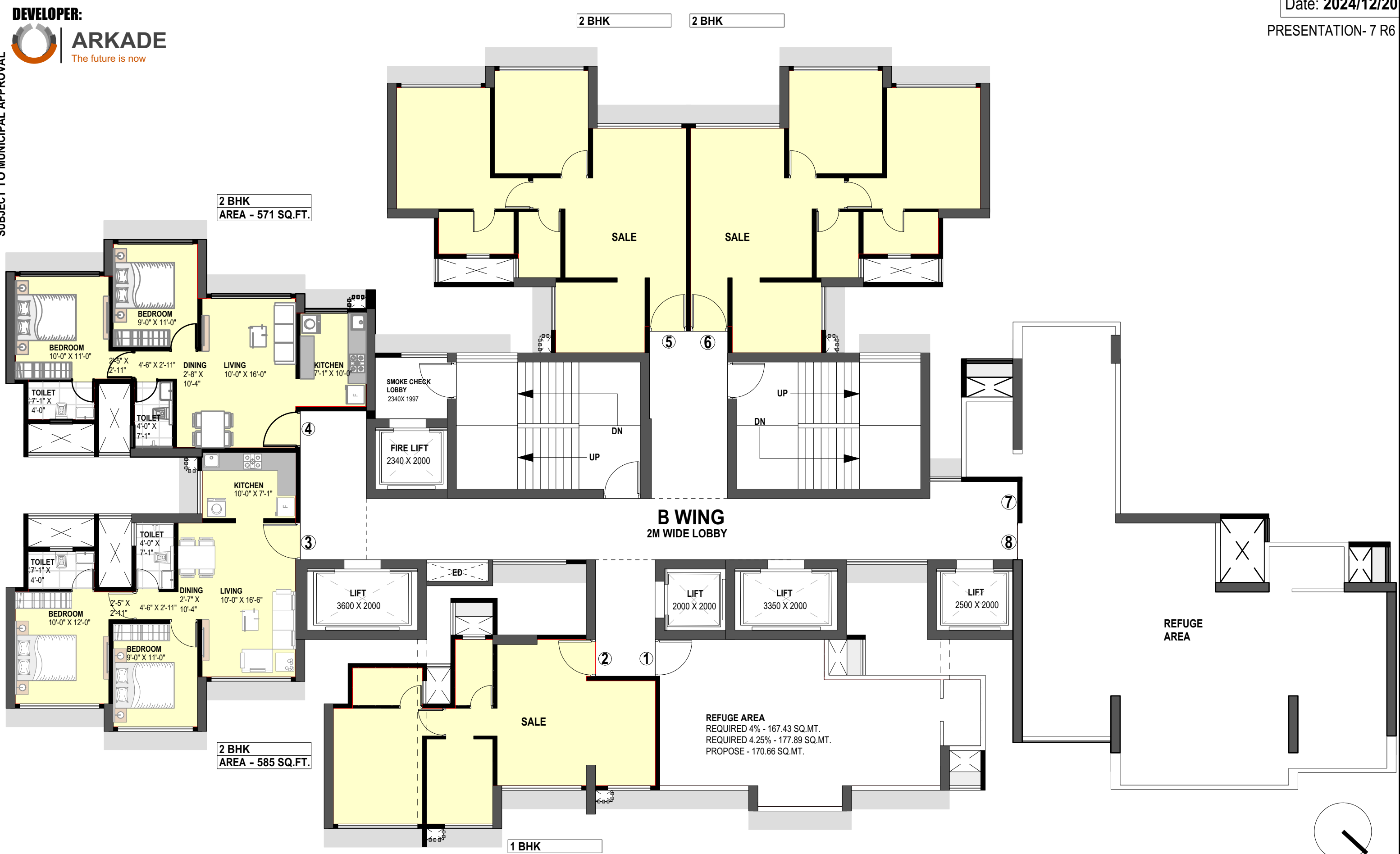


# B WING- 22ND & 23RD FLOOR PLAN PROPOSED REDEVELOPMENT OF NUTAN AAYOJAN CHS AT MALAD (W)



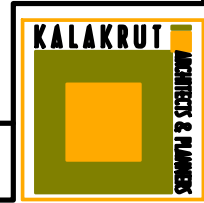
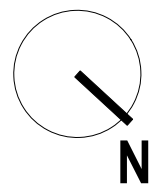


SUBJECT TO MUNICIPAL APPROVAL



# B WING- 24TH REFUGE FLOOR PLAN

## PROPOSED REDEVELOPMENT OF NUTAN AAYOJAN CHS AT MALAD (W)



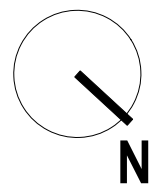








SUBJECT TO MUNICIPAL APPROVAL



# B WING- 31ST & 32ND FLOOR PLAN

## PROPOSED REDEVELOPMENT OF NUTAN AAYOJAN CHS AT MALAD (W)



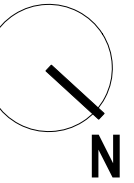
DEVELOPER:



**ARKADE**  
The future is now

SUBJECT TO MUNICIPAL APPROVAL

# THANK YOU



## PROPOSED REDEVELOPMENT OF NUTAN AAYOJAN CHS AT MALAD (W)

KALAKRUTI ARCHITECT AND PLANNERS : B-002, PRAMILA SADAN, SHREESIDHI COMPLEX, TILAK NAGAR, VISHWESHWAR ROAD, NEAR UDIPI HOTEL, NEXT TO HANUMAN MANDIR, GOREGAON (E), 400063, kalakruti.arch@gmail.com, 29276430

NOTE - THE ABOVE DRAWING IS THE COPY RIGHT DRAWING OF KALAKRUTI ARCHITECTS & PLANNERS MUMBAI, AND SHALL NOT B REPRODUSED / REUSED / TRANSFERED WITHOUT THE WRITEN PERMISSION OF THE ARCHITECT.